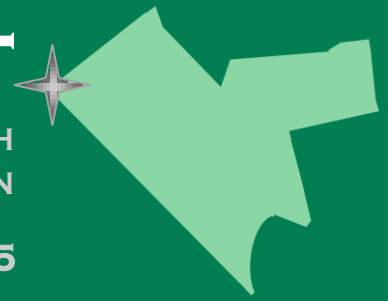


Spring General Membership Meeting

Tuckahoe Elementary School
Cafeteria
Thursday May 7, 2015, 7:30 PM

THE POINT
ARLINGTON-EAST FALLS CHURCH
CIVIC ASSOCIATION



SPRING 2015

General Membership Meeting Agenda

Larry Marcus

*Arlington County Bureau Chief
Transportation Engineering and Operations*

Beth Lennon

*Precinct Liaison
Arlington County Police Department*

Spring Elections

Securing improvements for pedestrian and traffic safety along Washington Boulevard from Lee Highway to Westmoreland has been a top priority for our civic association for a long while. Concerns escalated with the construction of a second onramp to I66. Join us to hear from Mr. Marcus about what safety upgrades are planned and when we might expect to see them.

Also taking part in the General Membership Meeting is Arlington County Precinct Liaison Corporal Beth Lennon. Did you know that Arlington divides its 10 police beats into three districts, based on civic association boundaries? The Arlington-East Falls community is assigned to the County's police department's 1st district team. Join us to hear what Corporal Lennon has to say about safety and trends around our neighborhood.

Corporal Lennon was hired in 1990 as a Police Officer. Over her 25 year career, she has worked the midnight patrol shift, the evening patrol shift as a Field Training Officer, a Canine Officer, and a Corporal on the evening patrol shift processing crime scenes. For the last four years she has worked as a community police officer as part of the 1st District Team.

Consider serving or nominating someone to serve on our civic association board. At the May 7 general membership meeting, we will ask

you to elect candidates to serve on our civic association Executive Board. The names and positions of those volunteering are listed along with their contact information. Feel free to get in touch with any of them if you have questions or are interested in joining us.

**AEFCCA EXECUTIVE BOARD
SLATE OF PROPOSED CANDIDATES**

President: Kelly Alexis

Vice - President: Franz Gimmler

Neighborhood Conservation Advisory Committee (NCAC) Delegate : Liz McGonigle
lizmcgonigle@verizon.net

NCAC Alternate Delegate: Harold Burghart
hootnlouise@verizon.net

Secretary: Anne Collins *arcollins@verizon.net*

Treasurer: Julie Bruns *drbruns@bellatlantic.net*

Area Representatives

Robb Metry *ramjt10591@verizon.net*

Dori Mitchell *dormitchell@mris.com*

Dennis Price *imagin38@aol.com*

Brad Rosenberg *bprosenberg@yahoo.com*

Pete Schirmer *pschirmer@verizon.net*

John Wilson *johnfwilson1@gmail.com*

Chris Hulett *chris@wafc.org*

Be a Part of the Arlington-East Falls Church Civic Association

Our community has long been a sleepy corner of Arlington, content with the way things are. However, sitting on the sidelines is increasingly risky considering the changes we

have seen: the Silver Line, I-66 modifications, and development around Lee Highway and Washington Blvd. are just a few examples.

By increasing our membership, we have the opportunity to become one of the larger civic associations with 2,000 households and about 5000 residents. Help us spread the word. Share this newsletter, and bring a neighbor with you **to this week's general membership meeting, Thursday, May 7, 2015, 7:30 p.m.**, at Tuckahoe Elementary School Cafeteria. You can learn the details on how to join with an email to our treasurer, Julie Bruns at drbruns@bellatlantic.net

Join our New Arlington-East Falls Church Civic Association Facebook Group!

Join our new Facebook group to post happenings around the neighborhood, share ideas about area improvements, community service projects, yard sales and more! We look forward to creating more community engagement and hearing what is important to you. Link to join is: [Arlington-East Falls Church Civic Association](#)

Tuckahoe Park Field Renovations

There was an Open House hosted by Arlington County's Parks and Recreation Department at Tuckahoe School on March 26 to discuss proposed field renovations. The Tuckahoe Park project includes: Renovation of the two existing natural turf/skinned infield diamond softball fields and combined outfield for other sport use; Renovation of associated spectator and players' bench areas, bullpens and batting cages; ADA accessibility will be made available for all proposed areas (provided from the road right of way from 26th Street or the adjacent school site), ADA access will also be provided from the existing park trail near North Sycamore Street. [For more information, click this link for the county website.](#)

Mary McLean-Outstanding Park Volunteer

Mary McLean, our community's Master Naturalist Habitat Improvement Coordinator, was selected as the individual winner for the 2014 Bill Thomas Outstanding

Park Service volunteer award. Mary was presented the award at a ceremony by Members of the Arlington County Board. The Award was established to pay tribute to lifelong parks volunteer Bill Thomas and to honor and encourage resident who also demonstrate a passionate dedication and support for our park programs, natural resources and public open spaces.

Mary has more than demonstrated the spirit of the award. We are fortunate to have her as part of our community and our champion of Tuckahoe Park. Congratulations, Mary and Thank you!



Benjamin Banneker Park Expansion

Last February, the County Board began procedures to acquire the property at 6608 18th Street North. The property adjoins Benjamin Banneker Park and is part of the County's long term strategy to acquire the properties along the south side of 18th Street North from North Van Buren Street to North Tuckahoe Street for expansion of the park. The acquisition is consistent with the Public Spaces Master Plan, an element of the County's Comprehensive Plan.

The plan is to move forward by the end of the year to remove the house and reestablish the site as open space. The house will be deconstructed rather than using traditional means and equipment. What this will entail is that the structure will be taken apart by a contractor, i.e. deconstructed, in order to reclaim, re-use and/or recycle as much of the materials as possible. There are no plans at this

point in time for improvements other than reseeded the area once the structure is removed.

Stewart Park Re-Opening

Charles A. Stewart Park located at 2400 N. Underwood Street, has been the host field for lots of fun and games since its recent re-opening! This winter Arlington County renovated the fields at Charles Stewart Park. They also put in a new irrigation system in the hopes that it stays green longer. You'll notice some of the walkways now have porous paving to help rainwater seep back into the ground and they have created better access to the field for people with disabilities.

Remember, you may not let your dog run off leash in the field (and please pick up after your pooch to keep our kids, other dogs and water systems healthy).

You can use the gazebo any time; reservations aren't needed. Feel free to make use of the [rectangular grass field](#) (permits take priority) or start a pickup game on the [basketball half court](#). Even consider having a kid's party at the park and rent some of the County's fun [moon bounces](#). Call 703-228-1805 for rental

information or go to parks.arlingtonva.us and click on rentals.

Arlington Community Facilities Study

In January, 2015, the Arlington County Board and the Arlington School Board launched a broad-based, year-long community facilities planning effort.

The two Boards appointed a 24-member [Study Committee](#) to build a consensus framework regarding the community's future funding and facility needs. The consensus framework will inform County and School Board decision-making related to meeting the community's requirements for additional school, fire station, vehicle storage sites and other facility needs in the context of Arlington's and the region's projected economic and demographic growth. The Resident Forum, a group open to all interested Arlingtonians, will meet with the committee and provide broad input throughout the process. Please visit these links to learn more about what recommendations may develop from the Community Facilities Study and how to get involved:

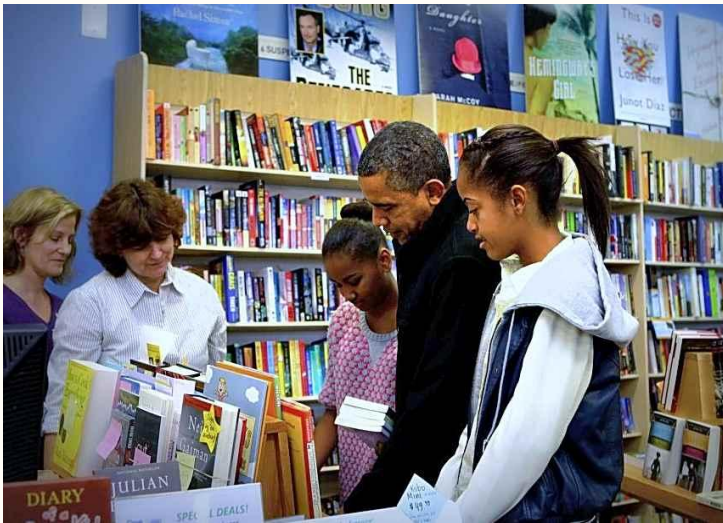
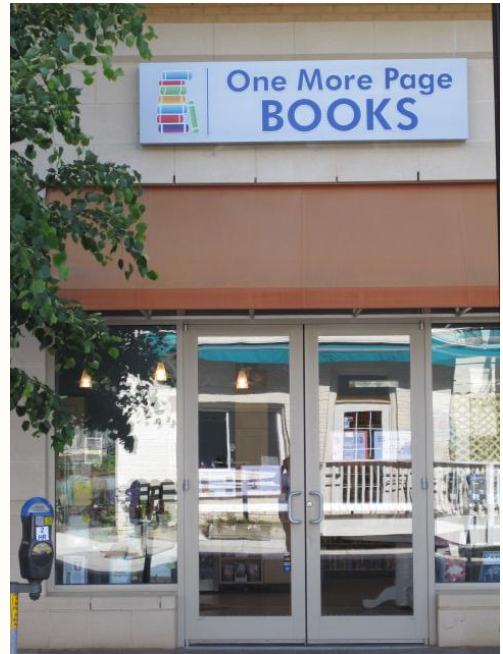
[Arlington Community Facilities Study](#)
[Facilities Study, February Meeting Recap](#)



One More Page Books & More

One More Page Books is an independent neighborhood-oriented bookstore that offers 6,000 quality titles for adults, teens and children along with wine and beer, artisan chocolates, greeting cards and featured art products by local artists. We are very fortunate to have One More Page Books as part of our Arlington-East Falls Church community. There is always something happening in the store -- including author talks and book signings, book launch parties, eight monthly book club discussions, wine & chocolate tastings, and community fundraisers. Even President Obama dropped by on Small Business Saturday!

One More Page Books is a wonderful addition to our neighborhood retail mix and an easy walk for many of our neighbors. Located at 2200 N. Westmoreland Street, this charming and inviting shop is just off Lee Highway and about 5 blocks from the East Falls Church Metro. It's also just around the corner from Chasin' Tails and across the street from La Cote D'Or and Yayla Bistro restaurants.



Street parking is plentiful and free retail parking is also available in the Westlee Building garage. Just look for the driveway immediately past One More Page at the edge of the building. Park in any space with a green retail spot and ring the bell at One More Page's back door. The store's hours are 10 am to 8 pm Monday through Saturday and Noon to 5 pm on Sunday.

For information about author events and book club discussions, visit the website www.onemorepagebooks.com or call (703) 300-9746. And follow One More Page on Twitter (@justonemorepage) and Facebook (One More Page Books & More).

* * *